

THE PHILIPPINES



CORAL TRIANGLE INITIATIVE
ON CORAL REEFS, FISHERIES AND FOOD SECURITY

PRESOM13
SENIOR OFFICIALS' MEETING
MANILA, 27 - 28 NOVEMBER 2017

UNIVERSITY PARTNERSHIP

Parallel Session Room B

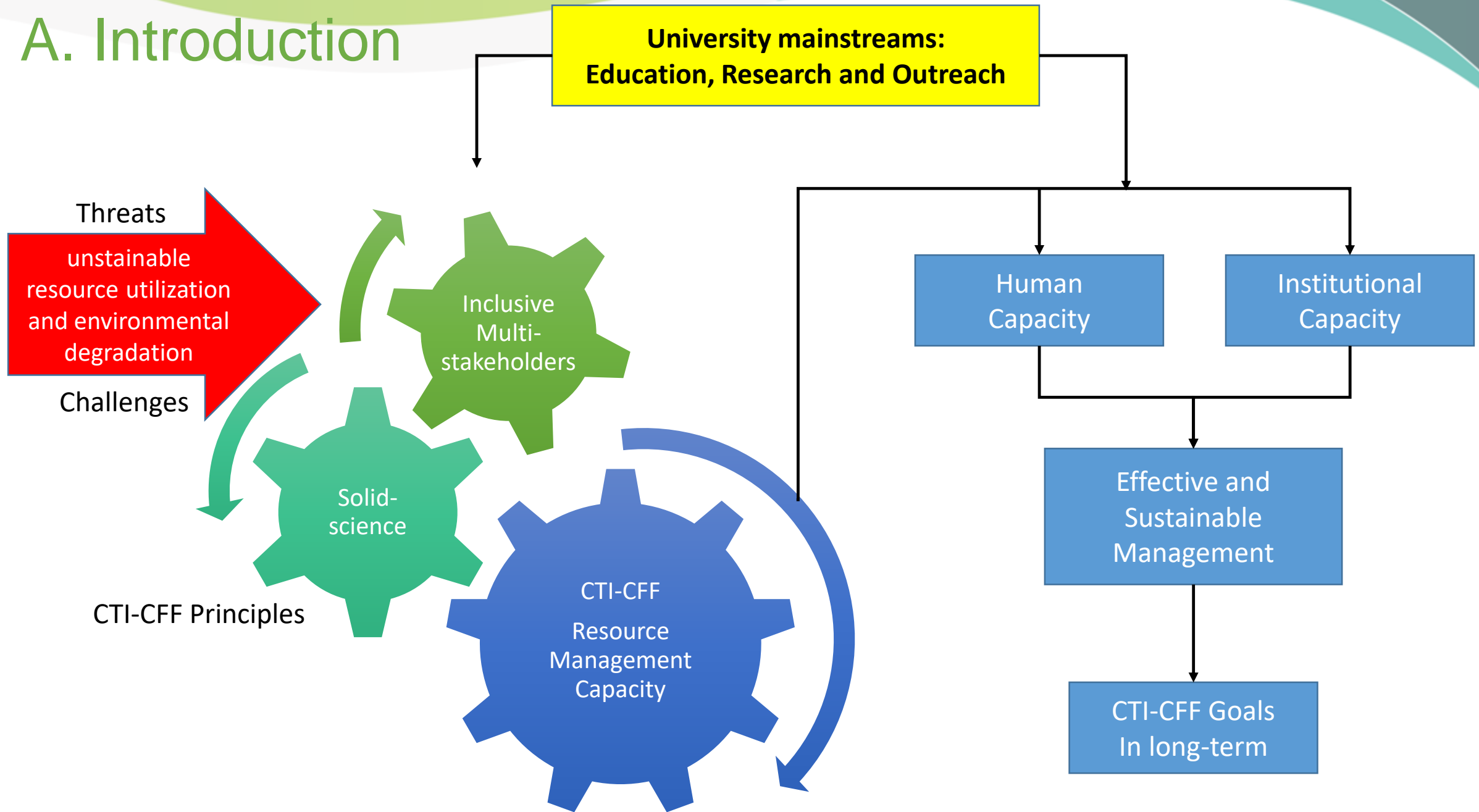
...

(Representative of CTI-CFF University Partners)

Outline

- A. Introduction
- B. Progress
- C. Program Priority
- D. Summary
- E. Draft SOM-recommendation

A. Introduction



CTI-CFF University Partnership

SOM-12 acknowledgement and endorsement

Papua New Guinea on 1-2 November 2016, in Decision No. 14.2 in particular 14.2.2 and Decision No.14.2.3.

14.2. Acknowledged and endorsed the effort made by the Regional Secretariat to establish cooperation arrangements: Decision No. 14.2.2

“Initiated and signed MoUs with four of Indonesian universities in October 2016 namely Bogor Agricultural University, Institut Teknologi Sepuluh Nopember, Hasanuddin University and Sam Ratulangi University as for strengthening CTI-CFF to achieve its goals in terms of research supports, education, and outreach program for capacity building and scientific advisory group”.

Decision No. 14.2.3

“Acknowledged the initiation of CTI-CFF Regional Secretariat for upcoming MOU with University Malaysia Terengganu from Malaysia, James Cook University from Australia; as well as the upcoming potential signing of MOU to extent cooperation arrangements with PEMSEA, University of Queensland from Australia and Solomon Islands National University from Solomon Islands in the frame of the proposed CTI-CFF University Partnership and other potential cooperation arrangements to be established and pursued by the CTI-CFF Regional Secretariat in the near future”.



B. Progress

SOM-12

MoU Signing = 4 Universities



Bogor Agricultural University
13 October 2016



Institut Teknologi Sepuluh Nopember
13 October 2016



Hasanuddin University
13 October 2016



Sam Ratulangi University
13 October 2016

SOM-13

MoU Signing = 8 Universities



Universiti Malaysia Terengganu
16 November 2016



James Cook University
November 2016



Universidade Oriental de Timor Lorosa'e
13 March 2017



University of Papua New Guinea
20 April 2017



University of Queensland
8 May 2017



Univerisidade Nacional Timor Lorosa'e
July 2017



University of Padjadjaran
18 August 2017



Solomon Islands National University
September 2017



Universiti Malaysia Sabah
Ongoing



University of the Philippines Diliman
Ongoing

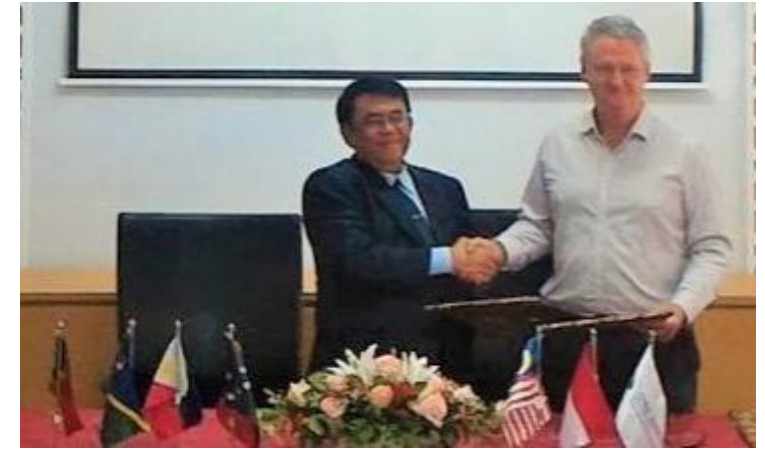
Ceremonial on MoU Signing



Signing MOU with IPB, ITS, UNHAS & UNSRAT, INDONESIA



Signing MoU with UMT, MALAYSIA



Signing MoU with JCU, AUSTRALIA



Signing MoU with UQ, AUSTRALIA



Signing MoU with SINU, Solomon Islands



Signing MoU with UNTL, Timor-Leste

The 1st Meeting of CTI-CFF University Partnership

“Building Tangible Program Actions for Capacity Building and Research Collaboration”



28 February – 1 March 2017

at Regional Secretariat of CTI-CFF

CTI Centre Jl. A.A. Maramis Kayuwatu, Kairagi II, Manado, North Sulawesi, Indonesia

Outputs:

1. Partnership Framework
2. Proposed Programs: **Capacity Building, Research and Outreach**
3. Prof. Dr. Grevo S. Gerung from Sam Ratulangi University, Manado, Indonesia as the coordinator in period of 2017-2020

This meeting was organized by Regional Secretariat and attended by **41 participants** coming from **5 National Coordinating Committees (NCCs)**, **10 Universities**, **9 Potential Partners** and **Potential Collaborators**.

Related Videos:

<https://www.youtube.com/watch?v=oSozdV7gdtM>

<https://www.youtube.com/watch?v=1oufo0LrVIY>



The 1st Meeting of CTI-CFF University Partnership

“Building Tangible Program Actions for Capacity Building and Research Collaboration”

REPORT

THE 1ST MEETING OF CTI-CFF UNIVERSITY PARTNERSHIP

“Building Tangible Program Actions for Capacity Building and Research Collaboration”

Manado, INDONESIA, 28 February – 1 March 2017



A Partnership in Capacity Building, Research Collaboration and Outreach



 CORAL TRIANGLE INITIATIVE ON CORAL REEF, FISHERIES AND FOOD SECURITY

© CTI-CFF Regional Secretariat

2017

28 February – 1 March 2017

at Regional Secretariat of CTI-CFF
CTI Centre Jl. A.A. Maramis
Kayuwatu, Kairagi II, Manado,
North Sulawesi, Indonesia

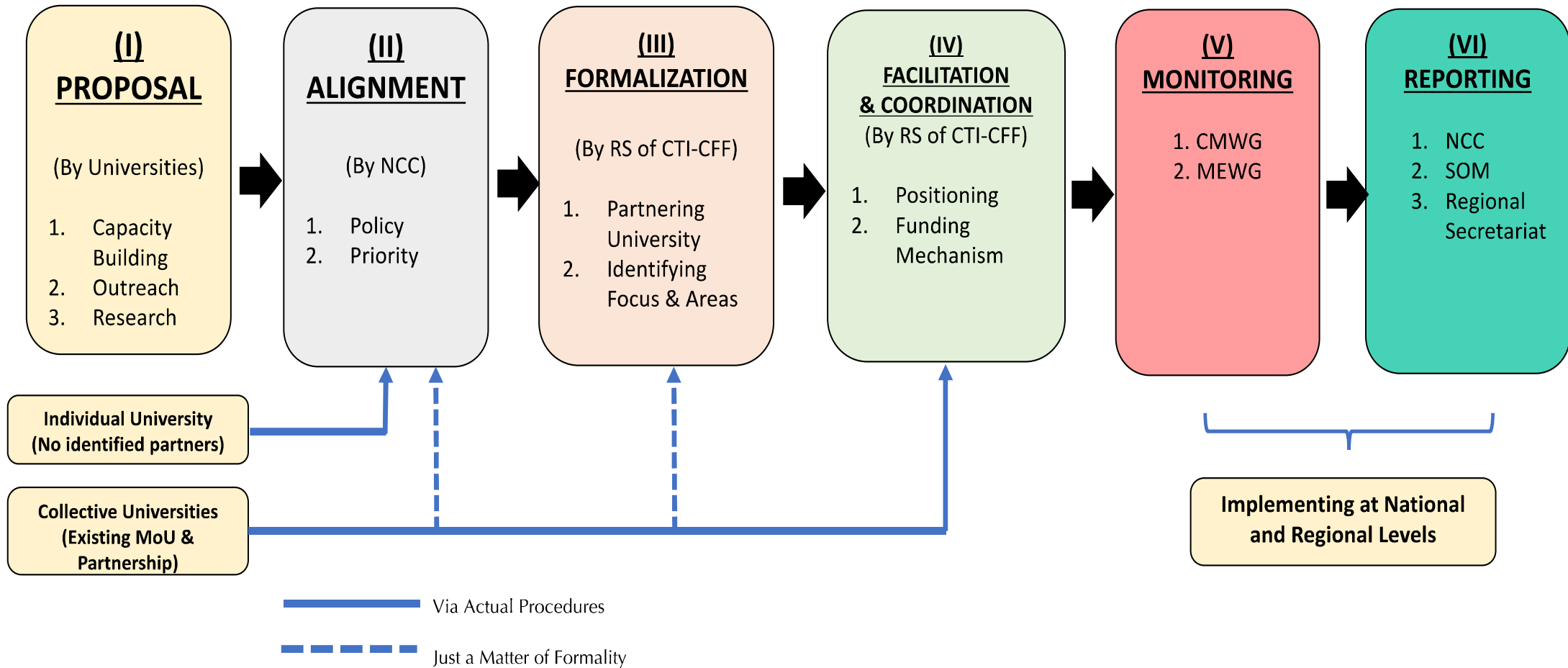
**O
U
T
P
U
T
S**

Established the CTI-CFF University Partnership Framework

Acknowledge Programs/action priorities which mainly focus on three mainstream foci: capacity building, research and outreach

Prof. Dr. Grevo S. Gerung from Sam Ratulangi University, Manado, Indonesia as the coordinator for the period of 2017-2020

The Framework of CTI-CFF University Partnership



The CTI-CFF University Partnership Framework is served as guideline for CTI-CFF University Partnership towards the agreed programs/action priorities which mainly focus on three mainstream foci: capacity building, research and outreach.

The Framework of CTI-CFF University Partnership (Contd.)

4 Funding Mechanisms of CTI-CFF University Partnership:

(IV)
FACILITATION
& COORDINATION
(By RS of CTI-CFF)

1. Positioning
2. Funding Mechanism

1

Consolidating funds brought by individual universities to become a shared funding pool

2

Budget support from CTI-CFF partners (e.g. GIZ, USAID, etc.) will be sourced using CTI brand

3

New resources would be sought from the government entities agencies (e.g. ministries, agencies, etc.) using CTI as the multilateral inter-government platform

4

Facilitation fund provided directly from the Regional Secretariat annual budget

Programs/Action Priorities

Research Priority Programs/Actions

1. Collaborative research of the coral reef adaptation and resilience ability to climate change
2. Research on Connectivity of key species (e.g. corals, fish, turtle, etc.) in the CTI region
3. Coastal livelihood and sustaining and regenerating the ecosystem services;
4. Direct and indirect impact of climate change and ocean acidification on small and large scale fisheries in CTI region
5. Study the connectivity and linkages between the ecosystem and the various ecosystem (e.g. mangrove, seagrass) in the CTI region
6. Mapping the ocean pattern (pollution)
7. Legal framework for the commercial fisheries in CTI region and ethical aspect of fisheries
8. Study on the mode of stranded marine mammals and the way to get them out
9. Improve availability and accessibility of data to the management or users (knowledge management)

Outreach Priority Actions

1. Scientific Meeting (Symposium) including participation to others symposium
2. Public awareness in the form of exhibition, campaign, media releases, and marine festival
3. Establishing Scientist Group for CTI-RPOA related themes
4. Improving university-based community service including assisting the local management authority or government in resources management such as ICZM
5. Initiating Regional Center of Excellence of CTI-CFF (a virtual or network based-CoE)
6. Providing a comprehensive mapping for coral reef and fisheries resources (by satellite combined with field observation) which can probably be linked to or enriching CT-Atlas
7. Providing web based lectures or seminars (e.g. webinar, video conference)

Capacity Building Priority Programs/Actions:

1. Academic collaboration
2. Regional training

CTI-CFF University Partnership Workshop on Program Development



THE CTI-CFF UNIVERSITY PARTNERSHIP WORKSHOP
ON PROGRAM DEVELOPMENT
Manado, North Sulawesi, Indonesia, 7-8 August 2017



Outputs:

Proposed program development on Capacity Building, Research and Outreach for 2017-2018

This meeting was organized by Regional Secretariat and attended by **38 participants** coming from **6 National Coordinating Committees (NCCs)**, **15 Universities**, **2 Potential Partners** and **Potential Collaborators**.

Proposed Program 2017-2018



Capacity Building

1. Special Assistance Program (SAP) for Timor-Leste in Developing Fisheries and Marine Sciences Education
2. International M.Sc. Subject on Coral Triangle Ecosystem Governance
3. Regional Training Program on Climate Change and Its impacts

1. Ecosystem Integrity: coral reefs, mangroves, seagrass* [SEP]
2. Eco-Connectivity (Ecoregion, MPA) [SEP]
3. Social-Economic Resiliencies [SEP]
4. Climate-Changed Related Impact to Fisheries* [SEP]
5. Marine Biogeography, Biodiversity [SEP]
6. Trans boundary Pollution (Land & Marine Based)*
7. Trans boundary Fisheries Management [SEP]
8. Stranded Marine Mammals [SEP]
9. Adaptive/Innovative Resource Management*

(*) potential research topic



Research



Outreach

1. Public Awareness in the form of Exhibition, Campaign, Media Releases, and Marine Festival
2. Scientific Meeting (Symposium) including participation to others symposium
3. CTI-CFF Science-Business Forum

C. Program Priority

Capacity Building

No.	List of propose activity	Institution in Charge	Component of program
1	Special Assistance Program (SAP) for Timor-Leste in Developing Fisheries and Marine Sciences Education	<ul style="list-style-type: none">• UNHAS, Indonesia• Jakarta Fisheries University, Indonesia	Content Development of SAP
2	International M.Sc. Subject on Coral Triangle Ecosystem Governance	<ul style="list-style-type: none">• UNSRAT, Indonesia• UMT, Malaysia	Curriculum Preparation
3	Regional Training Program on Climate Change	<ul style="list-style-type: none">• IPB, Indonesia• ITS, Indonesia• UQ, Australia• JCU, Australia	Curriculum Preparation

Outreach

No.	List of propose activity	Institution in Charge	Component of program
1	<p>Public awareness in the form of exhibition, campaign, media releases, and marine festival</p> <p>Notes: It is planned to relate with CT Day (9 June)</p>	<ul style="list-style-type: none"> • ITS, Indonesia (Marine Festival) • SINU • UMS • UPNG • UMT • Jakarta Fisheries University 	Meeting Preparation
2	<p>Scientific Meeting (Symposium) including participation to others symposium</p> <p>Note: It is planned to conduct in every 2 years</p>	<ul style="list-style-type: none"> • UNUD • Agency for Marine & Fisheries Research & Human Development, MMAF • UNHAS • CTI-CFF RS 	Meeting Preparation

Research

No.	List of propose activity	Institution in Charge	Component of program
3	CTI-CFF Science-Business Forum	<ul style="list-style-type: none">• CTI-CFF RS• IPB• UPD• UNPAD (Co. Coordinator)• UNTL	Designing Meeting

Research Priority

Research Priority <i>(after the 1st meeting of CTI-CFF University Partnership)</i>	Component of Program
<ol style="list-style-type: none">1. Collaborative research of the coral reef adaptation and resilience ability to climate change2. Research on Connectivity of key species (e.g. corals, fish, turtle, etc.) in the CTI region3. Coastal livelihood and sustaining and regenerating the ecosystem services4. Improving university-based community service including assisting the local management authority or government in resource management such as ICZM5. Initiating Regional Center of Excellence of CTI-CFF (a virtual or network based-CoE)6. Mapping the ocean pattern (pollution)7. Legal framework for the commercial fisheries in CTI region and ethical aspect of fisheries8. Study on the mode of stranded marine mammals and the way to get them out9. Improve availability and accessibility of data to the management or users	<ul style="list-style-type: none">• Building a task force to prepare the research concept note• Institution in charge: The University of Queensland, ITS, UNHAS, UNPAD, Agency for Marine & Fisheries Research & Human Development, MMAF

D. Summary

- University is a strategic – *capacity building, research, outreach* - stakeholder for the CTI-CFF (including for Regional Secretariat, TWGs, GWGs, and NCCs) in order to strengthen science-based resource management, and to build human resource and institutional capacities and innovation as a foundation of achieving effective and sustainable resource management against threats and emerging challenges.
- Each university involved has their own strength and potential related to CTI-CFF goals, and combined strength will couple the impacts for the long-term benefits.
- University has potential to promote CTI-CFF in many international, regional, and national, and local fora and possible events.
- As of today, engagement has been made to 12 Universities, and will have other 2 universities – University of the Philippines Diliman and University Malaysia Sabah.
- University Partnership has effectively defined their mechanisms, programs, and potential funding provision through two-time meetings facilitated by the Regional Secretariat.

E. Draft SOM-Recommendations

1. Acknowledge the progress and achievement of CTI-CFF University Partnership since last SOM-12 on the membership and its proposed programs on capacity building, research and outreach to support the achievement of the CTI-CFF outcomes and to address the improvement of science-based management
2. Acknowledge the initiative of the Regional Secretariat to engage other leading Universities by signing Memorandum of Understanding (MoU) with:
 1. Padjadjaran University (UNPAD) from Indonesia,
 2. Universiti Malaysia Terengganu (UMT) from Malaysia,
 3. The University of Papua New Guinea (UPNG) from Papua New Guinea,
 4. Solomon Islands of University (SINU) from Solomon Islands,
 5. Timor-Leste namely Universidade Nacional Timor Lorosa'e (UNTL) from Timor-Leste;
 6. Univercidade Oriental de Timor-Leste (UNITAL) from Timor-Leste,
 7. James Cook University (JCU) from Australia;
 8. University of Queensland (UQ) from Australia
3. Acknowledge the initiation from Regional Secretariat for upcoming MoU with:
 1. Universiti Malaysia Sabah Borneo Marine Research (UMS) from Malaysia,
 2. University of the Philippines Diliman (UPD) from Philippines.

E. Recommendations (Continued)

4. Encourage the Regional Secretariat to enlarge the initiation with other leading universities beyond the Coral Triangle Region;
5. Acknowledge the results and outcomes of:
 1. The 1st Meeting of CTI-CFF University Partnership, held in CTI Headquarter, Manado, Indonesia, on 29th February – 1st March 2017;
 2. The CTI-CFF University Partnership Workshop on Program Development held in CTI Headquarter, Manado, Indonesia, on held in 7th – 8th August 2017.
6. Appreciate and encourage Regional Secretariat to intensify efforts to make use of the existing MOUs with all Universities to support and strengthen all CTI-CFF bodies i.e. the Regional Secretariat, TWGs, GWGs, NCCs, and other related entities within CTI-CFF framework.
7. Task the Regional Secretariat to optimize the partnerships to find external funding possibilities from e.g. Global Environment Facility (GEF) and Green Climate Fund (GCF);
8. Tasked Regional Secretariat to facilitate the second meeting of CTI-CFF University Partnership and Program Development in 2018
9. Encourage the National Coordinating Committee to optimize the CTI-University Partnership flat form to enrich and support the implementation of the RPOA and NPOA

TERIMA KASIH - MARAMING SALAMAT - TANK IU
OBRIGADO- TAGIO TUMAS

