



CTI-CFF

Capacity Building RoadMap:

Scaling, Accelerating & Sustaining Skills in the Coral Triangle

2024-2027

Developed by the **CTI-CFF Regional Secretariat**

Through regional collaboration

With technical support from the Coral Triangle Center (CTC) &
World Wildlife Fund Coral Triangle Programme (WWF-CTP)

Supported by USAID-RDMA / SuFIA TS

Background

- June 2021** — Three ‘partners papers’ – included a paper on Capacity Building
- December 2021** — Capacity Building Stock-take for the CT countries completed. **RoadMap development endorsed at SOM16 (2021):**
*Decision: **10.6** Acknowledged the objective to develop institutional capacity to support international commitment to protect the coastal and marine resources (e.g. CBD 30x30 and other international framework); **10.7** Supported the development and implementation of a 10-year roadmap and partnerships to build human capital complementary to ongoing capacity building programs in the CT6; **10.8** Tasked the RS to establish a team with partners to conduct a regional capacity building assessment; and **10.9** Agreed to the development of innovative and cost-effective learning mechanisms for CTI-CFF that can be systematically scaled*
- Jan – May 2022** — Range of meetings held developing RoadMap vision, principles & pillars of work
- May 2022** — RS & Strategic Partners hybrid meeting – RoadMap Pillars of work, categories & priorities refined
- November 2022** — RoadMap recognized under **SOM17**
*Decision: **10.4**. Noted that the regional capacity building assessment will commence in Q1 of 2023*
- March 2023** — Green List IUCN meeting, providing input to RoadMap
- August 2023** — Support from SuFIA TS to further the RoadMap and prepare a three-year workplan

2030 RoadMap Vision

To accelerate skills-building across the CT to sustain and effectively manage resilient marine and coastal resources and seascape ecosystem services, in support of the RPoA2.0 targets, benefitting nature and communities.

RoadMap Pillars

Pillar 1: Tools & Packages

Pillar 2: Catalysing Leadership

Pillar 3: Delivery on-the-ground

Pillar 4: Peer Learning

Pillar 1: Tools & Packages



Online repository to support capacity building

- Coral Triangle Focused
- Dedicated to Capacity Building
- Accessible (low bandwidth, diverse languages*)
- Dynamic and Semi-Interactive

Will Include:

- Library of resources (guidelines, case studies etc.)
- Directories for practitioners (of capacity providers, funding opportunities, learning networks)



Development of the CTC Academy for Online Learning

- Specifically targeted towards CT nations
- Available in CT ranging languages *
- Focused on CT exemplars, case studies and practitioner needs.

Initially focused on self-taught courses = Free, independently doable in own study time, with automated test function and certification provided linked to registry

* inc. English, Bahasa Indonesia, Malay, Tetun and Tagalog; with audio and video including Pidjin English, Tok Pisin, and Visayan

TWG 's to select one priority topic each for new course development

Pillar 2: Systems for Catalysing Leadership



1x CT Ambassador per CT country

WHO:

Young, emerging leaders (from communities, development / private sector), GenZ/ Millenials, Influencers

TO DO WHAT:

Advance awareness about CT, promote RPoA2.0, be 'CT Envoys', generate support for region, media attention, funding support (regionally, globally)

SUPPORTED BY:

Training & skills-building (public speaking, CT awareness)



**CORAL TRIANGLE
AMBASSADORS
PROGRAMME**

Pillar 3: Delivery on-the-ground



REGIONAL TRAINING
NODE DEVELOPMENT

Seascapes focused.

Collectives of ‘Capacity Providers’ (training organizations) in each seascape to:

- **Collaborate, share and scale training materials** (courses, syllabi, resource information), **methods and approaches** to training
- promote recruitment and **training-of-trainers with wide-ranging language skills and cultural diversification**
- **optimize training delivery** in priority areas
- Advance cross-learning between capacity providers
- Bring an **economy of scale** to training through collaboration.



CORAL TRIANGLE
APPRENTICESHIP
PROGRAMME

An extension of learning site visits

Practitioners visit a site for 1 to 3 months

Join activities & on-site work

Focused on key learning topics (pre-identified)

Pillar 4: Peer Learning

At least 1 (up to 2) learning sites per CT country in portfolio

May be:

- MPAs sites (e.g., CTMPAs), or
- other refugia areas (e.g., LMMAs, MMAs, OECMs etc.), or
- fishery management areas (e.g., FIPs, SSF /EAFM sites)

Learning Site Operationalization toolkit developed

Host agencies supported to lead and manage learning exchanges



Three new networks:

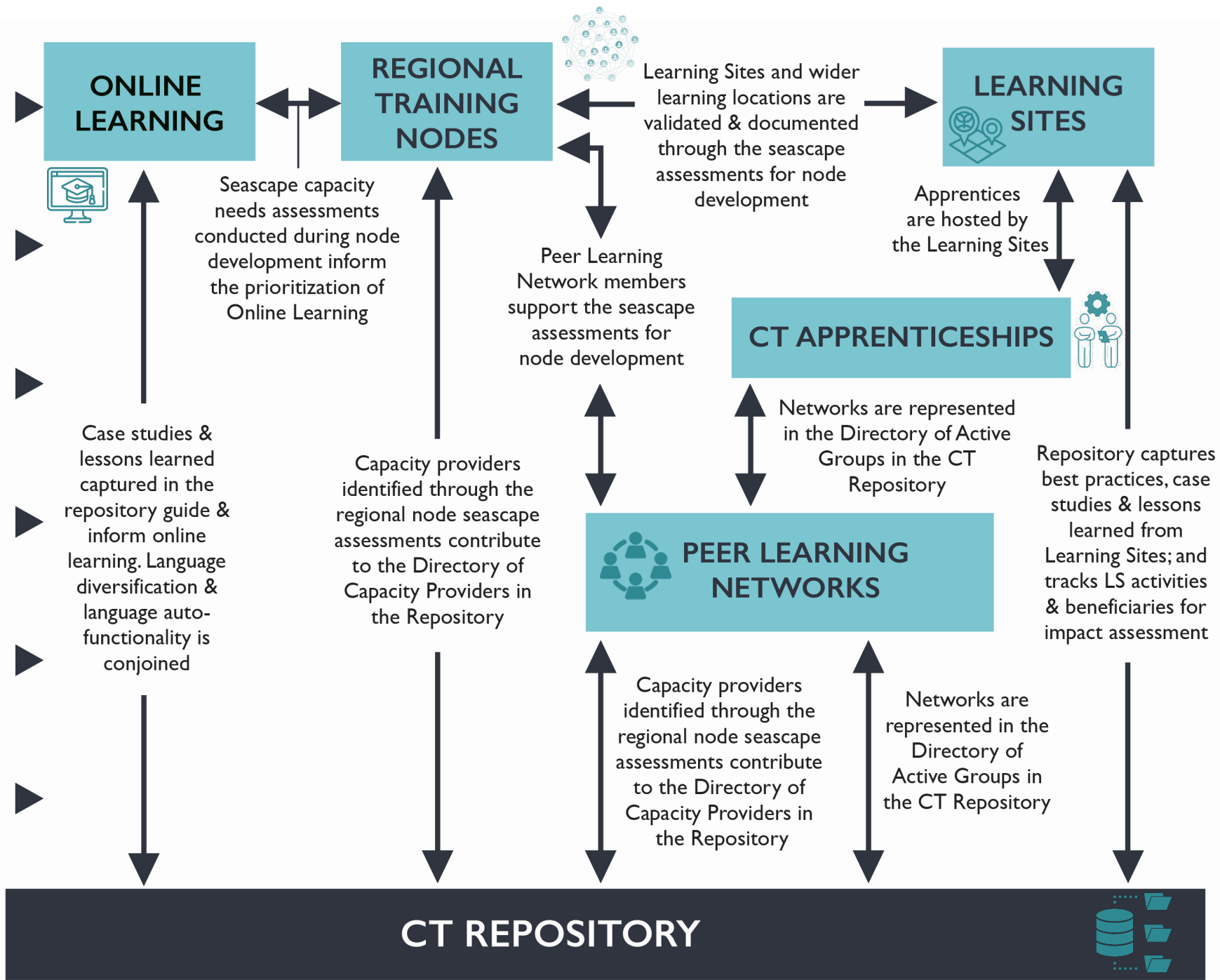
- MPA Managers Network (MPAMN)
- CT Community Groups Network (CT-CGN)
- Young Marine Leaders Network (YLN)

On-going support to existing networks:

- Women's Leaders Forum (WLF)
- MPA Learning Network (MPALN)
- Maritime Local Government Network (CTI-LGN)

CT AMBASSADORS

Promote the CT & all RoadMap elements



All elements of the RoadMap are Inter-linked

Proposed Key Decisions

1. Acknowledged the efforts of partners, CTC and WWF-CTP, with support from USAID-RDMA SuFIA TS, in working with the RS to develop the CTI-CFF Capacity Building RoadMap
2. Acknowledged the extensive inputs from the CT6 in CTI-CFF Capacity Building RoadMap development that have been incorporated into the three-year workplan
3. Endorsed the vision of the CTI-CFF Capacity Building RoadMap 'To accelerate skills-building across the CT to sustain and effectively manage resilient marine and coastal resources and seascape ecosystem services, in support of the RPoA2.0 targets, benefitting nature and communities.'
4. Endorsed the three-year workplan of the RoadMap under the four pillars, and task RS to collaboratively ensure sustainability and achievement of the vision of the 2030 CTI-CFF Capacity Building RoadMap
5. Tasked the RS to establish a small team with partners to lead the implementation of the CTI-CFF Capacity Building RoadMap

Thank you

CTI-CFF Capacity Building RoadMap

Developed by the

CTI-CFF Regional Secretariat

Through regional collaboration

With technical support from the
Coral Triangle Center (CTC) and
World Wildlife Fund Coral Triangle Programme (WWF-CTP)

Supported by USAID-RDMA / SuFIA TS

Coordination and development support provided by
Sustainable Solutions International Consulting (SSIC)