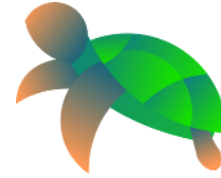


# TRIPOD



## Targeting Regional Investigations for Policing Opportunities & Development



Bureau of International Narcotics and Law Enforcement Affairs

10 November 2022

CTI-CFF Threatened Species Working Group Meeting

# Combating Wildlife Trafficking between Malaysia, Indonesia and the Philippines Program Deliverables

**ASSESS** capabilities of regional law enforcement agencies

**1**

**DEVELOP** counter wildlife trafficking enforcement tools

**2**

**EMPOWER** law enforcement in target areas

**3**

**SUSTAIN** networks and tools prepared for the IWT Community

**4**

# Current Status I

- Counter Transnational Organized Crime (CTOC) training and Care for Confiscated Wildlife (CCW) training, including the ShellBank marine turtle traceability toolkit, completed in Indonesia and Sabah, Malaysia
- CTOC and CCW PH training dates set
  - CTOC: 16-20 Jan 2023
  - CCW: 23-26 Jan 2023
- Gap Analysis and Needs Assessments report drafting on-going
- Translation of TRAFFIC Report for Indonesian government on-going

## Current Status II

- Rapid Reference Guide drafting on-going
  - Hybrid meeting with WWF-MY, Head of Enforcement of Sabah Wildlife Department, Justice for Wildlife Malaysia (preparing RRG for Peninsular MY), Danau Girang Field Center to develop a structure and outline – scenario-based was determined to add highest value for law enforcers
  - Meeting with WWF-ID and relevant agencies is to be scheduled
  - In-person consultations will be held in January

# Current Status III

- Regional event will be held in Q1/2023
  - Will be hosted by ASEANAPOL
  - Currently working on a draft agenda
- The regional workshop will facilitate discussions between law enforcement officers from ID, MY, and the PH and develop and/or review project outputs
  - Transboundary collaboration and sharing of information and intelligence, e.g. through a regional Special Investigation Group, regional Confiscation Advisory Group, etc.
  - Transboundary Law Enforcement Standard Operating Procedures
  - Rapid Reference Guides
  - Repatriation Procedures
  - ShellBank marine turtle traceability as law enforcement tool
  - TRIPOD Toolkit website
- Project Closure: end March 2023



# Marine Turtle Genetic and *ShellBank* Program

On behalf of WWF



Presented by Ceci Fischer on behalf of  
Christine Madden Hof  
Global Marine Turtle Conservation Lead  
WWF-Coral Triangle Programme  
CTI-CFF TS meeting, Partner Update 7 November 2022

# THE GLOBAL TORTOISESHELL TRADE

April 2020



## Dark Side of Everlasting Tortoiseshell-Crafting in Japan

Japan's Domestic *Bekko* Market Dependent on Smuggled Raw Material Risking the Extinction of Hawksbill Turtles



**JJFF**  
Japan Tiger and Elephant Fund  
Masayuki Sakamoto



## SHELL SHOCKED: JAPAN'S ROLE IN THE ILLEGAL TORTOISESHELL TRADE

THIS REPORT HAS BEEN PRODUCED IN COLLABORATION WITH



Memorandum of Understanding on the Conservation and Management of Marine Turtles and their Habitats of the Indian Ocean and South-East Asia

Distr. GENERAL

MT-IOSEA/SS.7/Doc. 10.1  
Agenda item 5c

28 August 2014

SEVENTH MEETING OF THE SIGNATORY STATES  
Bonn, Germany, 8-11 September 2014

### ILLEGAL TAKE AND TRADE OF MARINE TURTLES IN THE IOSEA REGION

The Sixth Meeting of IOSEA Signatory States (Bangkok, January 2012) expressed concern that illegal trade of marine turtles and their derivatives was largely under-reported by Signatory States, suggesting a need for closer examination of the problem. The present paper aims to examine the patterns and trends in illegal turtle take and trade in the IOSEA region since the year 2000, as well as to review measures taken by governments, intergovernmental bodies and NGOs. The study considers

## MARINE TURTLE SEIZURES IN INDONESIA, MALAYSIA AND VIET NAM, JANUARY 2015 – JULY 2019

Total number of seizures



73

INDONESIA



50

VIET NAM



40

MALAYSIA

Commodities

EGGS

91,216

75,062

DEAD

1,275

1,012

PROCESSED SHELL  
SOUVENIRS, JEWELLERY

936

936

MEAT (KG)

1,767

1,606

LIVE

1,880

597

SHELL (PIECES)

1,069

1,014

SHELL (KG)

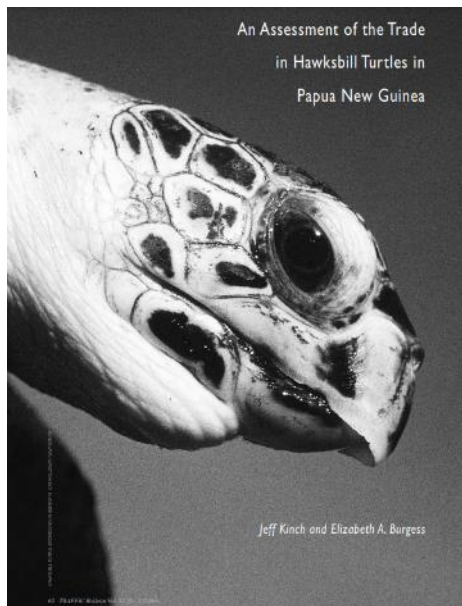
709.2

609.46

TAXIDERMIED

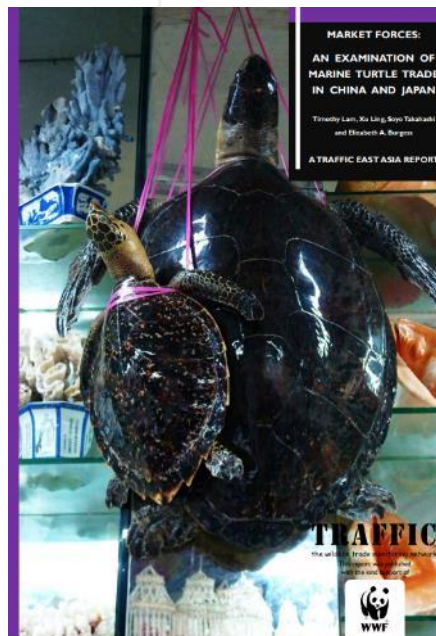
174

156



An Assessment of the Trade in Hawksbill Turtles in Papua New Guinea

Jeff Kinch and Elizabeth A. Burgess



MARKET FORCES:  
AN EXAMINATION OF  
MARINE TURTLE TRADE  
IN CHINA AND JAPAN

Tianyi Lin, Xu Ling, Sora Takasaki  
and Elizabeth A. Burgess

A TRAFFIC EAST ASIA REPORT



E.g.  
hawksbill  
conservation  
status in the  
Asia-Pacific

- Solomon Islands (**increasing for one stock**)
- Republic of the Marshall Islands (**declining**)
- most of Micronesia (**declining**)
- Palau (likely **declining**)
- Guam (**likely extirpated**)
- Vanuatu (**likely declining**)
- North-east Qld stock (**declining**)
- Thailand (**likely stable**)
- Philippines (**unknown**)
- Viet Nam (**depleted**)
- Japan (**depleted**)
- Singapore (**unknown**)
- Indonesia (**unknown**)
- Timor Leste (**unknown**)
- Papua New Guinea (**likely declining**)
- Western Australia stock (**stable**)
- Sulu Celebs (Malaysia) (**likely declining**)





Copyright Credit © Keith  
Arnold/WWF-US

## Using genetics to track turtles:



1. **Conservation** (e.g. what populations exist, migrate, are shared, in or need further protection etc.)
2. **Law enforcement** (e.g. trace illegal trade)



# WHAT IS SHELL BANK?

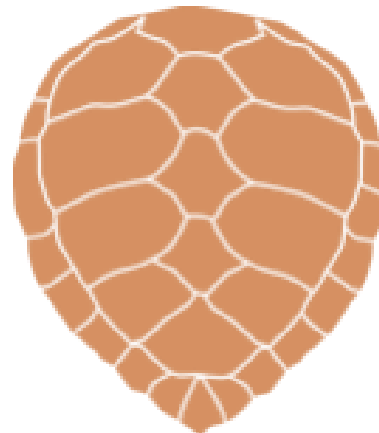
Tools to track the marine turtle trade and turtles most at risk:

- Build & advance *traceability knowledge and technologies*
- Coordinate access to & *expand the 'bank' of genetic data*
- *Train in-country and embed as common practice*

## WHY IS SHELL BANK NEEDED?

To help halt illegal trade by:

Enabling scientists, conservationists and policy makers to **track the illegal trade** of marine turtles (from “**sale to source**”) and to identify **populations most at risk**.





© Education for Nature - Vietnam (ENV)

## 'bank' of genetic data from the wild

**Rookery/Nesting Database:** DNA samples collected from individual wild nesting turtles, hatchlings or eggs.

## Conservation Research

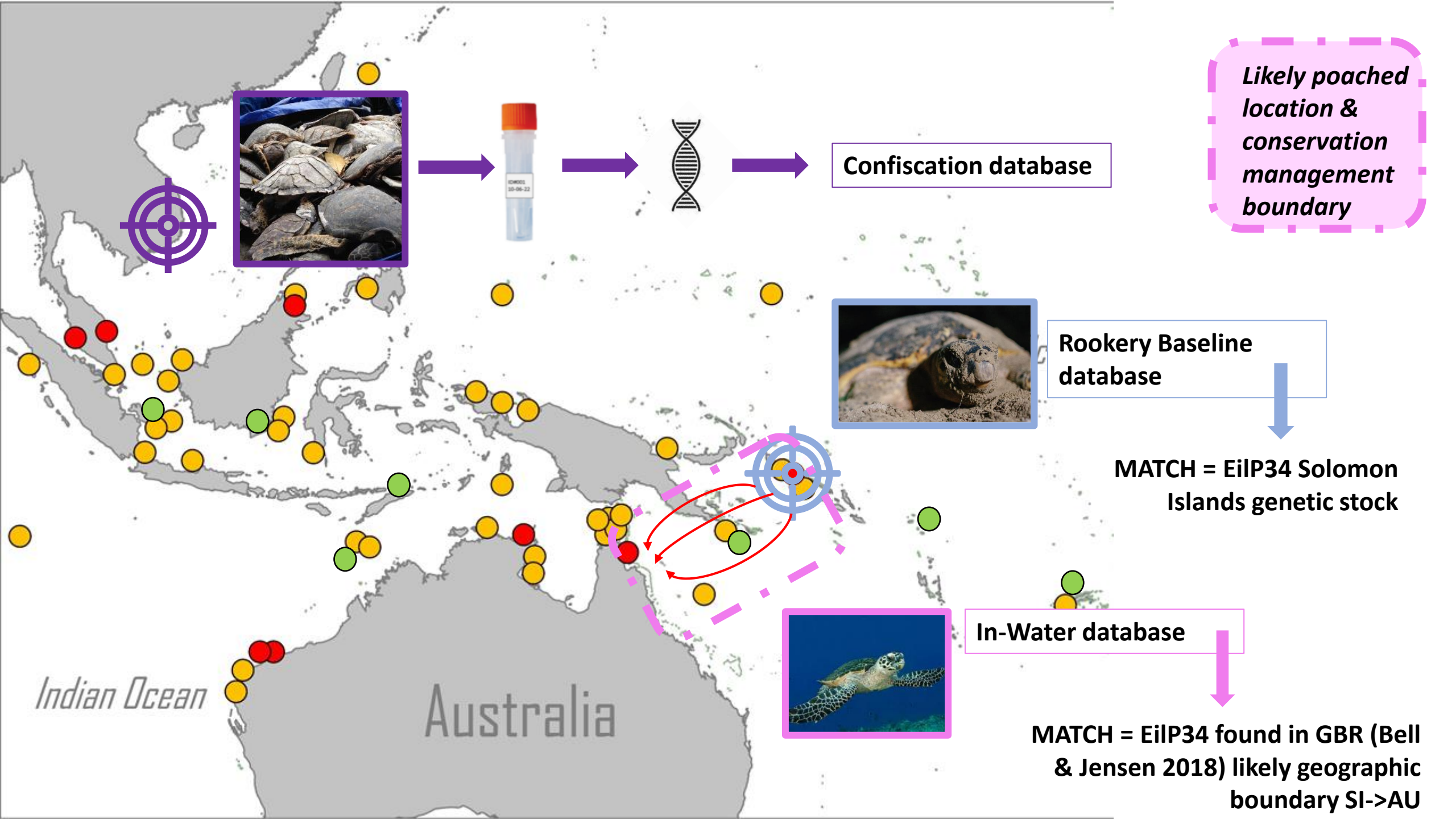
**In-Water Database:** DNA samples collected from individual turtles collected away from their nesting beaches, e.g while foraging. Or stranded or by-catch turtles



## 'bank' of genetic data from seizures or confiscations or stockpiles

## Law enforcement

**Confiscated Product Database:** DNA samples collected from confiscations (also for the purpose of forensic DNA testing) e.g. live animals, eggs, whole stuffed animals, raw scutes, or tortoiseshell products

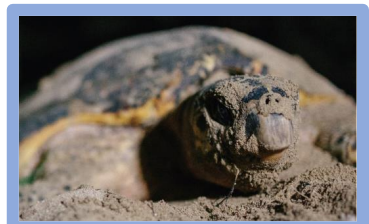


# What does ShellBank look like

## Conservation Research



## Law enforcement



Rookery Baseline database

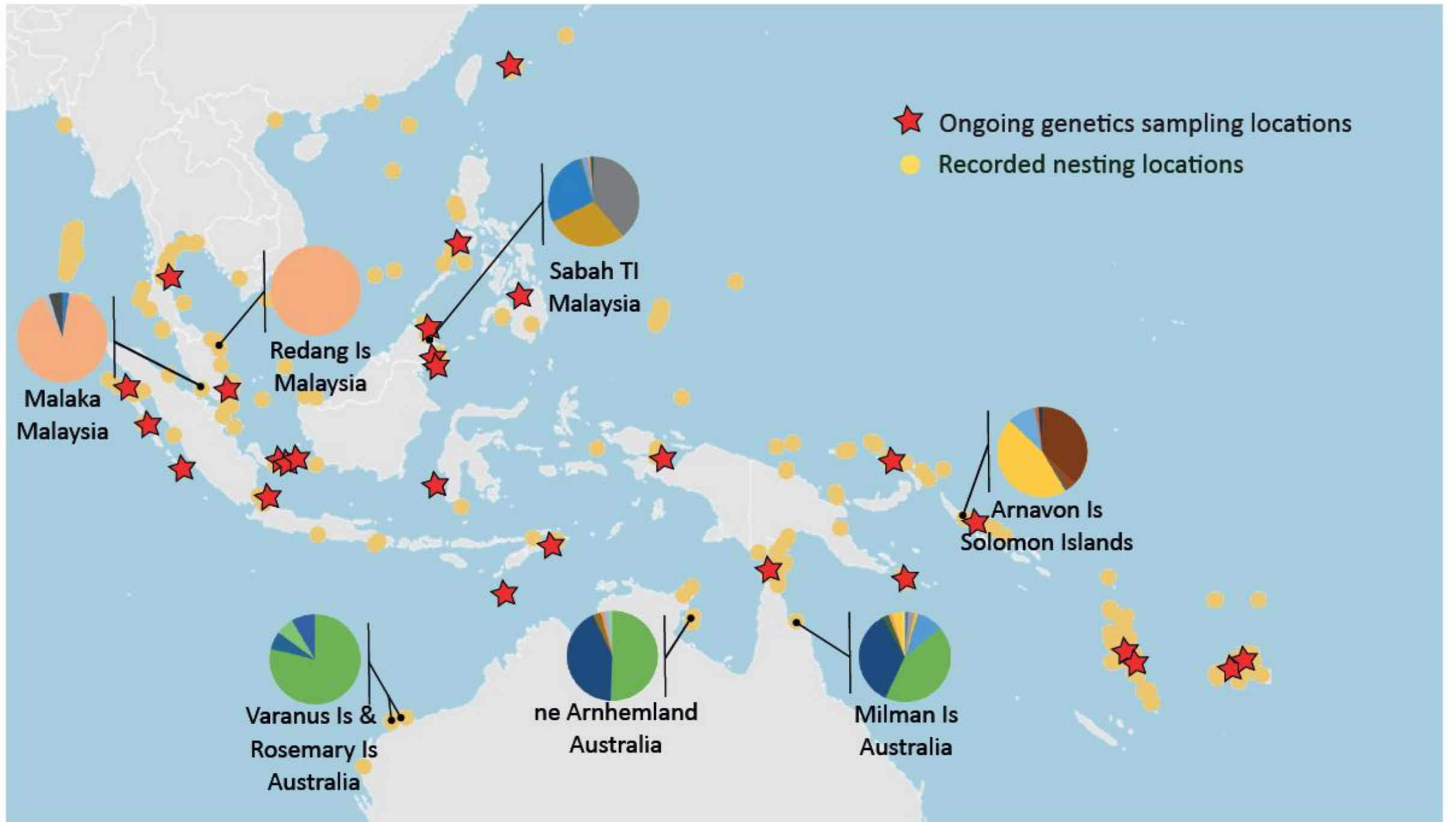
In-Water database



Photo Credit: Maritime Affairs and Fisheries



Confiscation database





**SURRENDER  
YOUR SHELL**  
DETECTING THE ORIGIN OF TORTOISE SHELLS



### ShellBank in practice, supported by Australian Government

- 328 surrendered
- 62 items (19%) analysed
- **5/62 items (8%) likely East Malaysia origin**
- ShellBank now embedded as part of Aus Government law enforcement chain

#### REGIONAL ORIGIN

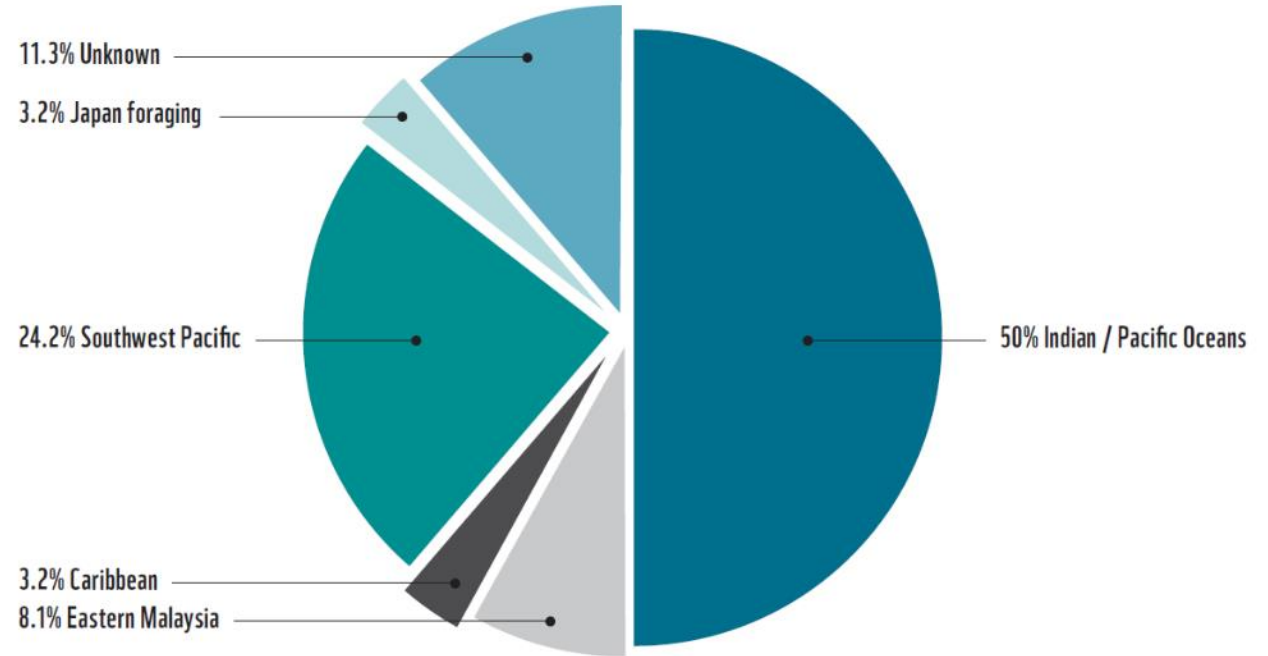
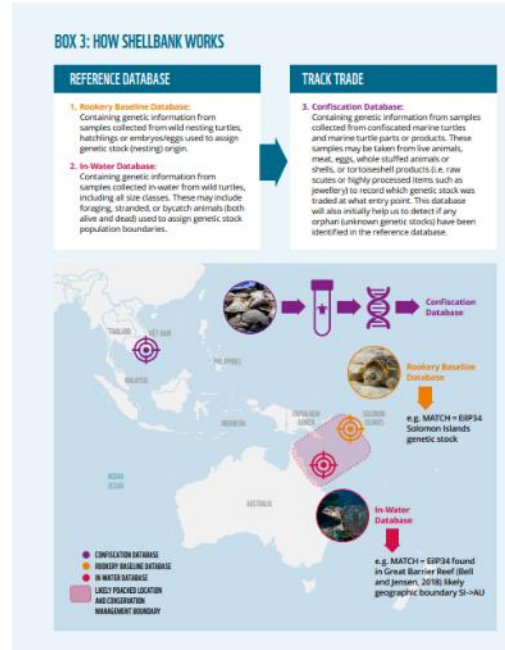
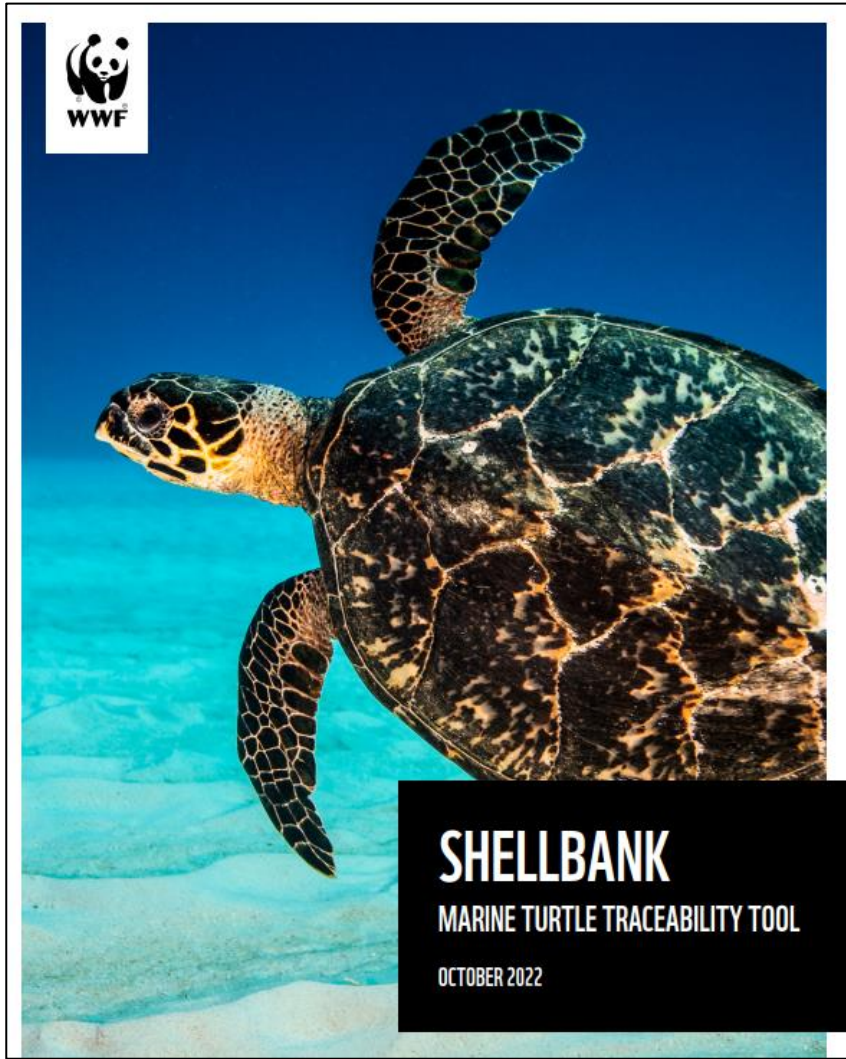


Figure 8: Likely regional origin of 62 hawksbill products.

# The new ShellBank Report and Design

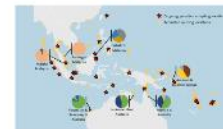
Report will be launched at CITES COP19 side event



## ROOKERY BASELINE AND IN-WATER DATABASE



## CONFISCATION DATABASE



Logo designed



**SHELLBANK**  
Global Marine Turtle Genetic Database

Email address



[shellbank@wwfint.org](mailto:shellbank@wwfint.org)

Website

[www.shellbankproject.org](http://www.shellbankproject.org)  
(currently under development)





# ASIA-PACIFIC MARINE TURTLE GENETIC WORKING GROUP

Enhance technical capacity, standardise methodologies, identify research priorities & establish a regional collaborative network to facilitate genetics



## The Exploratory Steering Committee



1. Create a directory of individuals, groups and institutions currently involved in genetics work (or with the potential to get involved) in the region, as well as their current capacity and interests.

2. Identify and prioritize conservation knowledge gaps that can be solved with a genetic approach and design common priority research questions.

3. Consolidate regional best practice protocols for sample collection and long term storage and standardize genetic analysis protocols and pipelines for priority research questions.

4. Provide training on sample processing, as well as genetic analysis and interpretation, to increase participants' genetic comprehension and improve in-country capacity to carry out genetic research.

5. Work towards developing a regional collaborative digital tissue sample database (including existing repository databases and museum collections) and identify mechanisms for data sharing.

6. Identify and create a directory of relevant government agencies, points of contact, and permit processes to ensure that sea turtle genetic research is being coordinated with appropriate government agencies and provide support to enhance their understanding of the role that genetics can play in national and international policy and legislative decision making.

7. Create a long-term plan for the Asia-Pacific Marine Turtle Working Group (i.e. identify mechanism for collaborations, determine structure and size of the working group and subgroups, identify the steering committee).

## Members of the Working Group





# ASIA-PACIFIC MARINE TURTLE GENETIC WORKING GROUP

# 2021

## 2021 ONLINE WORKSHOP SERIES

January 2021

**Workshop 1** - Introduction and scope of the Working Group

February 2021

**Workshop 2** - Introduction of Participants and their projects

March 2021

**Workshop 3** - Sample collection, preservation and management

April 2021

**Workshop 4** - Genetic analyses of samples for rookery stock structure and MSA

May 2021

**Workshop 5** - Other genetic/genomic tools

June 2021

**Workshop 6** - Forensic and introduction of the ShellBank Project

July 2021

**Workshop 7** - Wrap up workshop - summary and looking towards the future

# ASIA-PACIFIC MARINE TURTLE GENETIC WORKING GROUP

This series of workshops is supported by the By-catch and Integrated Ecosystem Management (BIEM) Initiative being implemented by the Secretariat of the Pacific Regional Environment Programme (SPREP) under the Pacific-European Union Marine Partnership (PEUMP) programme.

Funded by the European Union (EU) and the Government of Sweden, the EUR 45 million PEUMP programme promotes sustainable management and sound ocean governance for food security and economic growth, while addressing climate change resilience and conservation of marine biodiversity. It follows a comprehensive approach, integrating issues related to oceanic fisheries, coastal fisheries, community development, marine conservation and capacity building under one single regional action.

## FUNDING PROVIDED BY:



## PROGRAM:

Workshop 1 - Introduction to the Working Group, the Participants, and their Projects

Workshop 2 - Sample Collection, Preservation, and Management

Workshop 3 - Genetic Analyses of Samples for Rookery Stock Structure and MSA and Novel Genetic/Genomic tools

Workshop 4 - Illegal Trade, Forensics and the ShellBank Project

Workshop 5 - Wrap Up Workshop - Summary and Looking Towards the Future

## ISTS40 WORKSHOP

Bridging the Gaps: The Asia-Pacific Marine Turtle Genetic Working Group

<https://www.ists40perth.com.au/program/workshops-regional-meetings/>

## CONTACTS:

Website: [www.marineturtlegenetics.org](http://www.marineturtlegenetics.org)

Email: [info@marineturtlegenetics.org](mailto:info@marineturtlegenetics.org)

## TECHNICAL SUPPORT PROVIDED BY:

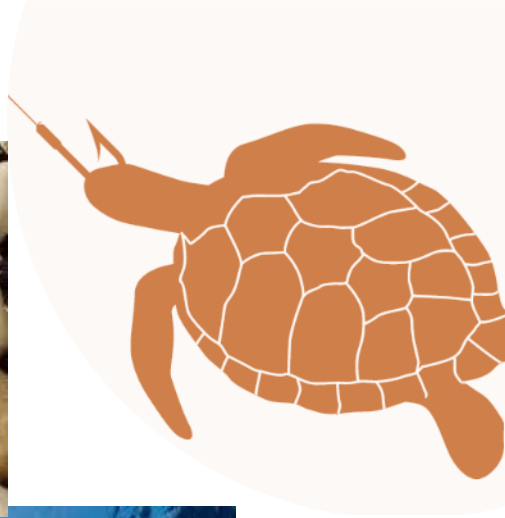


# Asia Pacific Marine Turtle Genetic Working Group

# 2022



# Collect samples



Targeting Regional Investigations for Policing Opportunities & Development



Bureau of International Narcotics and Law Enforcement Affairs



# Provide training



# Help deliver mandates



Status, scope and trends of the legal and illegal international trade in marine turtles, its conservation impacts, management options and mitigation priorities

## Directed to Parties

18.BB Parties are urged to:

- a) review the findings of the study presented in information document CoP18 Inf. 18 and use these to inform targeted conservation and management efforts;
- b) fully implement the provisions of CITES that are relevant to the seven species of marine turtles listed on Appendix I;
- c) develop and/or update management and action plans for the conservation of marine turtles inclusive of the recommendations in information document CoP18 Inf. 18;
- d) use CITES fora, including the Animals Committee and Standing Committee, to raise and discuss challenges relating to illegal trade in marine turtles;
- e) collect in a standardized manner, including at different governance levels, illegal wildlife trade data, that can be used for monitoring trade in CITES-listed marine turtles; and submit comprehensive and accurate information on illegal trade in marine turtles in their annual illegal trade reports to the CITES Secretariat;
- f) improve monitoring, detection and law enforcement activities related to marine turtles in coastal areas and at transaction points (e.g. in the marketplace, online, maritime areas, and at air- and seaports);
- g) collect samples of marine turtles for DNA analysis, including from seized specimens, to determine species involved and populations of origin and provide these to forensic and other research institutions capable of reliably determining the origin or age of the samples in support of, for example, research, investigations and prosecutions;
- h) improve intra- and interregional cooperation, collaboration and exchange of actionable intelligence regarding illegal take of and trade in marine turtles;
- i) ascertain key trade routes, methods, volumes, and trade 'hot-spots' using available technologies, and enforce national and international regulations or other mechanisms that apply to marine turtles take and trade.

*For more information or to be part contact:  
[chof@wwf.org.au](mailto:chof@wwf.org.au)*

**TOGETHER, IT'S POSSIBLE.**



# CTI-CFF TSWG 2022 Work Plan and TRIPOD

<p>Targeting Regional Investigations for Policing Opportunities &amp; Development (Tripod) Project (MY, ID, PH):</p> <ul style="list-style-type: none"> <li>• Governments to participate in national Counter-Transnational Organised Crime (CTOC) training</li> <li>• Governments to seek involvement in the national taskforce</li> <li>• NCCs participate in CTOC instructor course and regional workshops</li> <li>• NCCs seek involvement in the regional taskforce</li> </ul>	<p>Jan-Mar 2022 *Specific dates to be confirmed</p> <p>Jun-Oct 2022 *Specific dates to be confirmed</p>	<p>Funded by TRIPOD partners if elected (noting Leahy Vetting is required)</p>
<p>TRIPOD ongoing and scaling engagement:</p> <div style="border: 2px solid blue; padding: 5px; margin: 10px 0;"> <ul style="list-style-type: none"> <li>• NCCs and RS to meet with TRIPOD partners to further explore opportunities for CTI-CFF to host and convene a regional taskforce and house TRIPOD toolkit for ongoing delivery and scaling to other CT countries</li> </ul> </div> <ul style="list-style-type: none"> <li>• If favourable, convene first taskforce meeting, post training.</li> </ul>	<p>Post SOM, likely a time between Jan-Mar 2022</p> <p>In line with TRIPOD regional workshop or TS Working Group meeting</p>	<p>Funded by TRIPOD partners</p>

# TSWG Work Plan 2023 Suggestions/ Recommendations for SOM-17

1. CTI-CFF member States participate in the Asia-Pacific Marine Turtle Genetic Working Group and contribute to ShellBank, in line with CITES turtle mandates, to collect DNA samples from wild and seized marine turtle specimens to determine species and geographic origin in support of research, investigations and prosecutions.

2. CTI-CFF encourages member states to replicate the activities of the TRIPOD project after project closure in their countries and help disseminate the outputs of the project to inform national legislation.

# CTI-CFF TSWG 2023 Work Plan and TRIPOD – Proposed Additions (in bold)

Planned Activities	Time Frame	Proposed Budget
<p>Targeting Regional Investigations for Policing Opportunities &amp; Development (TRIPOD) Project (ID, MY, PH):</p> <ul style="list-style-type: none"> <li>• <b>Philippine government</b> to participate in national Counter-Transnational Organised Crime (CTOC) training</li> <li>• NCCs participate in regional workshop and involvement in the regional taskforce</li> </ul>	<p>Jan 2023</p> <p>Feb/Mar 2023</p>	<p>Funded by TRIPOD partners</p>
<p>TRIPOD ongoing and scaling engagement:</p> <ul style="list-style-type: none"> <li>• NCCs and RS to meet with TRIPOD partners to further explore opportunities for CTI-CFF to host and convene a regional <b>counter-IWT</b> taskforce <b>with selected national focal points</b>, and house TRIPOD toolkit for ongoing delivery and scaling to other CT countries, if favourable, convene first taskforce meeting post training</li> </ul>	<p>Feb/Mar 2023</p> <p>In line with TRIPOD regional event</p>	<p>Funded by TRIPOD partners</p>



# CTI-CFF TSWG 2023 Work Plan and TRIPOD – Proposed Additions (in bold) – cont.

Planned Activities	Time Frame	Proposed Budget
<p>TRIPOD ongoing and scaling engagement:</p> <ul style="list-style-type: none"> <li>• <b>CTI-CFF member States participate in the Asia-Pacific Marine Turtle Genetic Working Group and contribute to ShellBank, in line with CITES turtle mandates, to collect DNA samples from wild and seized marine turtle specimens to determine species and geographic origin in support of research, investigations and prosecutions</b></li> <li>• <b>CTI-CFF encourages member states to replicate the activities of the TRIPOD project after project closure in their countries and help disseminate the outputs of the project to inform national legislation</b></li> </ul>	<p>On-going, beyond project end</p> <p>Beyond project end</p>	<p>In-part funded by ShellBank project</p> <p>Seek funding</p>

# Thank you



Klaas J. Teule ([kjteule@wwf.id](mailto:kjteule@wwf.id))

Chris Hof ([chof@wwf.org.au](mailto:chof@wwf.org.au))

Ceci Fischer ([ctp-cfischer@wwf.id](mailto:ctp-cfischer@wwf.id))

Jackie Thomas ([jthomas@wwfpacific.org](mailto:jthomas@wwfpacific.org))