

**Local name:** Tuhik  
**Size:** L. 250mm (10")

**Habits:** Migratory species, common along coast on exposed mud, sand and coral flats, on rocks, and also ricefields. Alone or in groups.

**Description:** Note uniform upperparts, straight bill, short yellow legs and prominent white eyebrow contrasting with dark lores. Call whistled to-whweep, also single sharp alarm call or harsh klee-klee or weet-weet.



**Grey-tailed Tattler**  
*Heteroscelus brevipes*

**Ruddy turnstone**  
*Arenaria interpres*

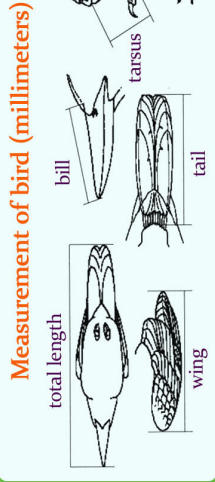
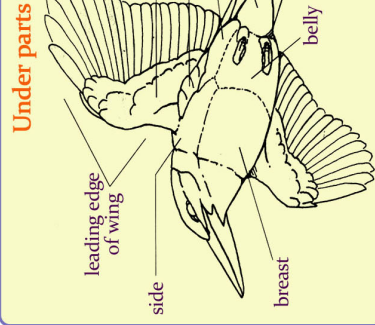
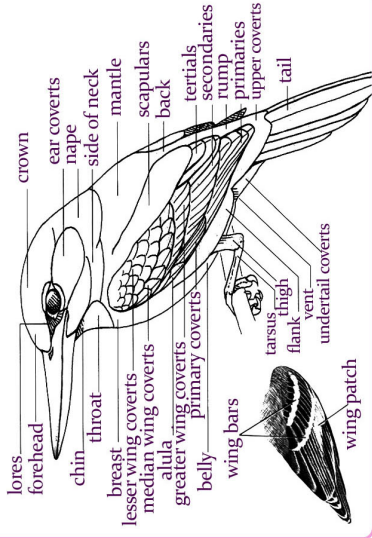
**Local name:** Tuhik  
**Size:** L. 210mm (8 1/4")

**Habits:** Migratory species, fairly common, along coast on beaches and exposed tidal flats, rarely inland. Forages by turning over stones and other debris with its short, chisel-like bill.

**Description:** Note stocky build, short orange legs, dark breast band in all plumages and unique bill. Call clear staccato trik-tuk-tuk and tuk-e-tuk, or sharp chick-ik or kuu when flushed.



**Identifying birds: Birds Topography**



**CHSP**  
Coral Triangle Support Partnership  
The Nature Conservancy  
Protecting nature. Preserving life.  
CONSERVATION INTERNATIONAL  
USAID  
FROM THE AMERICAN PEOPLE

frequently-sighted  
**birds**

in Ang Pulo,  
Brgy. Quilitisan,  
Calatagan  
Batangas, Philippines



Calatagan Mangrove Forest  
Conservation Park  
Marine Protected Area (MPA)

Reference: Kenedy et. al. (2002) A Guide to Birds of the Philippines



**Greater sand-plover**  
*Charadrius leschenaultia*

**Local name:** Tuhik  
**Size:** L 190mm (8 1/2")  
**Habits:** Migratory species, common along the coast I exposed mud, sand and coral flats, usually in good numbers associated with Lesser Sand-plover and waders.  
**Description:** Long legs, bill, neck and more angular head than Lesser Sand-plover, more white in the wing ad on sides or rump in flight, and by breeding black and rufous parts usually narrower, and non-breeding breast band usually reduced to side patches.  
Call trilling krrri-krrri or trii-trii.

**Rufous-necked stint**  
*Calidris ruficollis*



**Local name:** Tuhik  
**Size:** L 158mm (6 1/4")  
**Habits:** Migratory species, common, found all year on mud flats and ricefields.  
**Description:** Breeding has more rufous on head than Little Stint. Non-breeding inseparable. Call chit.



**Great egret**  
*Egretta alba*

**Local name:** Tagak  
**Size:** L 910mm (36")  
**Habits:** Migrant species, uncommon in variety of wetlands from coastal marshes to ricefields. Forages alone or in groups often joining other white egrets.  
**Description:** Large size, slow wing beat, long kinked S-shaped neck, along with black line of gape extending past eye help identify this species.



**Brahminy kite**  
*Haliastur Indus*

**Local name:** Lawin  
**Size:** L 510mm (20")  
**Habits:** Resident species, common in open areas often near water; but also in mountains to 1500 meters. In flight wings held forward and slightly bent at wrist.  
**Description:** Diagnostic contrasting white and rufous plumage with black primaries in adult. Immature has buff head and reddish brown breast with pale shaft streaks. Call distinctive nasal ah-a-eeehhh.

**Malaysian plover**  
*Charadrius peronii*

**Local name:** Tuhik  
**Size:** L 157mm (6 1/4")  
**Habits:** Resident species, uncommon on isolated sand and coral beaches, singly or in pairs. Smallest Philippine plover.

**Description:** Told from Kentish Plover by thick bill and complete or nearly complete narrow black breast band in males or rufous band in females, which continues around neck forming a black or rufous collar behind white one. Call soft chit, whit or twik, similar to Kentish plover.

**Local name:** Bakarong  
**Size:** L 573mm (23")  
**Habits:** Resident species, uncommon and widespread along rocky coasts, on reefs, and on tidal flats. Forages quietly waiting for food.

**Eastern Reef Egret**  
*Egretta sacra*

**Description:** Dark phase is more common than white phase although some intermediate plumage bird occur. White phase separated from other white egrets by yellow bill, relatively short neck, and greenish legs.



**Little heron**  
*Butorides striatus*

**Local name:** Layang-layang  
**Size:** L 127mm (5")

**Habits:** Resident species, common throughout the Philippines along coasts, in towns, and in open country, rarely over forest but often associated with water. Often nests in the eaves of houses and buildings.  
**Description:** Lacks long outer tail feathers and dark breast band of Barn Swallow. Call a series of soft twsit-twseit almost running together in twitter.

**Pacific swallow**  
*Hirundo tahitica*



**Little Egret**  
*Egretta garzetta*  
**Local name:** Tagak  
**Size:** L 610mm (24")

**Habits:** Migratory species, common in all wetland areas from coastal marsh and tidal flats to ricefields. Recorded throughout the year. Active feeder, sometimes runs after fish and other prey. Also uses feet to stir the bottom to flush prey.

**Description:** long slender black bill and balk legs with yellow feet are diagnostic. Generally silent.

**Whimbrel**

*Numenius phaeopus*

**Local name:** Balangkawitan  
**Size:** L 435mm (17")  
**Habits:** Migratory species, common along the coast in grassy marshes, mud and on exposed coral flats, beaches and sometimes ricefields.

**Description:** Note alternating dark brown and buff stripes on head. Rarer Bristle-thighed Curlew is darker and generally more golden with pale rufous in rump, tail and underwing. Call whistled chi-u-it like Grey Plover, whee-whee-whe and whee-wheoo, all different than WHimbrel's.



**Kentish plover**

*Charadrius alexandrinus*

**Local name:** Tuhik  
**Size:** L 175mm (7")

**Habits:** Migratory species, common along coast on beaches and exposed mud and coral flats, occasionally inland along lakes and near standing water.

**Description:** Dark patches at sides of breast-never forming a breast band-dark legs, long thin bill, white collar, ad white forehead continuous with white eyebrow. Alarm call is a hard prrr or plaintive too-eeet.